

# Northwest Skåne

Welcome to our region!

Visitor  
map



## Searching for more info?

Inspired and ready to explore Northwest Skåne but feel like you're missing some info? Please make use of our Visitor Centers, InfoPoints and remember that **Google is your friend!**

## Local food & drinks

1. Arilds Vingård
2. Bjärhus Gårdsbutik
3. Heberleins Kött & Delikatess
4. Helsingborgs Bryggeri
5. Höganäs Saluhall
6. Lakritsfabriken
7. Sandgårdens Skafferi
8. Skånehill Gård
9. Spirit of Hven Backafallsbyn
10. Tant Grön och Elin & Arvid
11. Tomatens Hus
12. Vejby Wineyard

## Swedish Fika

13. Brödkultur 2.0
14. Bäckdalens Handelsträdgård
15. Fika på Torpet
16. Flickorna Lundgren på Skäret
17. Lillesdal Inredning & Café
18. Lillaro Café
19. Lotta på Åsen
20. Möllebackens Våffelbruk & Gästgifveri
21. Pumpans Café & Restaurang
22. Sweet Harmony
23. Vildrosor & Höns

## Heritage

24. Birgit Nilssons museum
25. Dunkers kuturhus
26. Fredriksdal
27. Ingeborrarps museum
28. Krapperup
29. Kärran
30. Landskrona Citadell & Kolonier
31. Norrviken
32. Sofiero
33. S:t Petri kyrka
34. Tomarps Kungsgård
35. Tycho Brahe-museet

## Handicraft & Design

36. Bodils bod
37. Glashytta Christian Svensson
38. Hemslöjden Skåne
39. Keramiskt center
40. Klippan Yllefabrik
41. Märta Måås-Fjetterström
42. Mölle Krukmakeri & Cafe
43. Vävaren i Båstad
44. Wallåkra Stenkärlsfabrik
45. Åbergs Krukmakeri

## Adventure

46. Veteranjärnvägen - Draisine tour
47. Vens cykeluthyrning - Bike ride on Ven
48. Landskronabåtarna - Offshore fishing
49. Kallis - Cold bath Helsingborg
50. Kullabergsguiderna - Climbing and purpose safari
51. Upzone - Aerial Adventure Park
52. Vallåsen - Bike Park & Downhill skiing
53. Söderåsens Nationalpark - Hiking

## Hike

The perfect way to spend a day exploring Northwest Skåne. Bring a friend, some water and comfortable shoes!

[skaneleden.se](http://skaneleden.se)

## Bike

Kattegattleden and Sydskullleden are bike trails that runs along the coastline and offers uninterrupted beautiful scenery. You will find more information at:

[trailsforsouthernsweden.com](http://trailsforsouthernsweden.com)

## "Tura"

To "tura" means to take the ferry back and forth across Öresund, while enjoying Danish specialties such as a red hot dog and beer. A popular activity among the locals, try it!

... Bike trails  
... Hiking trails



# A day out in Denmark

It is almost impossible to visit Northwest Skåne without heading across the water to Denmark.

Helsingör is actually one of our main visitor attractions! The ferry between Helsingborg and Helsingör takes approximately 20 minutes and whilst on board you can enjoy two yummy red hotdogs and a Tuborg beer!

While you're in Helsingör, you can stroll around the shopping streets, take a swing by Kronborg castle and visit the Maritime Museum along the way.

If you want to travel a bit further south, Copenhagen is only 45 minutes away by train. You could also make a stop in Humlebaek and visit the world renowned Louisiana Museum of Modern Art or go on a ride at the amusement park Bakken in Klampenborg.

## Visitor Service

We want to make it easy for you to visit us!  
Physical or digital information is always  
readily accessible wherever you are and  
whenever you need it.

In order to help our visitors in the best possible way, we have the Tourist Centers as well as approximately 90 InfoPoints around the region where someone is always happy to answer your questions.

An InfoPoint is a place where you can go when you need information and inspiration for what to do in the region. It can be a reception desk at the hotel you're staying at, the entrance to an attraction or even a popular café.

To find the closest Tourist Center or InfoPoint, go to:



**www.familjenhelsingborg.se/  
uppleva-och-gora**

## Bike

## Northwest Skåne offers amazing bicycle trails!

Kattegatleden starts in the center of Helsingborg and runs northward all the way up to Gothenburg. You can cycle the entire 395 km along our beautiful coastline with the sea as your companion. Sydkustleden runs from Helsingborg southbound along the coast all the way to Simrishamn on Skåne's east coast where it merges with Sydostleden. Together, these three national bicycle trails make up a total of 900 km of incredible cycling.

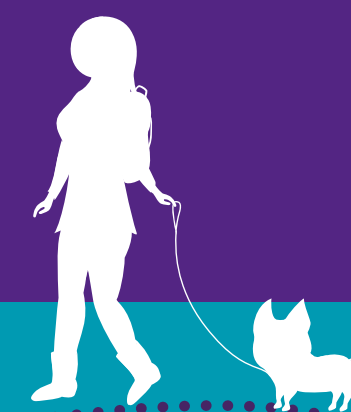
Our diverse and rolling landscape is the perfect terrain for mountain biking, suitable for both beginners and more

# Hike

Discover stunning nature at your own pace.

Skåneleden is divided into five separate hiking trails and spans 1000 km. Three of the trails reach into our northwest corner of Skåne. There are trails that runs along rocky cliffs in Kullaberg, offer panoramic views from the hills of Glumslöv, glistening sea views in Bjäre and beautiful beach forests in Hallandsåsen. In the national park of Söderåsen you will encounter lush, leafy forests, dramatic valleys, rushing streams and a marvellous view at Kopparhatten.

If you want to experience nature on foot, you've come to the right place!



## Fun places for kids

There are so many things to do for kids. Here is a list of the most popular activities and attractions to share with your family.

- 1. Kungsbygget Äventyrspark**  
Zipline, toboggan & climbing
- 2. Helsingborgs djur- och lekpark**  
Zoo & playground
- 3. Järnvägens Museum**  
Railway Museum
- 4. Karlslundsbadet**  
Indoor adventure pool
- 5. Naturum Kullaberg**  
Fun and educational nature quizzes
- 6. Prins Oscars Naturlekplats**  
Nature playground
- 7. Väderötrafiken**  
Seal Safari to Hallands Väderö
- 8. Tropikariet**  
Indoor zoo
- 9. Ugglebadet**  
Outdoor and indoor adventure pools
- 10. Ängelholms Hembygdspark**  
Homestead Park
- 11. Ängelholms Flygmuseum**  
Aviation Museum

## Skate & Kick Bike

"Skating is like flying!" Here you will find all of the skate and kick bike parks for all levels of ability.

12. Bjuv – Skate park
13. Båstad – Båstad Skate park
14. Helsingborg – Jutan, indoor
15. Höganäs – Kulasköten Skate park
16. Klippan – Klippans Skate park
17. Landskrona – Lagunen Skate park
18. Perstorp – Perstorps Skate park
19. Åstorp – Hyllinge Skate park
20. Ängelholm – Ängelholm Skate park
21. Örkelljunga – Örkelljunga Skate park

Denmark's largest skate park, Multiparken, is located in Helsingør and covers an area of 10.000 m<sup>2</sup>.

# Hello!

**Helsingborg Family** has a little bit of everything and it's all nearby! Along the coast there are dramatic cliffs and amazing beaches to enjoy. Further inland you will find wild, primitive forests and magical lakes.

Don't forget there is also a rich cultural tapestry and an active city life to enjoy! There are small cosy farm shops and restaurants with locally sourced produce from the entire region along with several local vineyards and breweries offering exciting taste experiences. We can't get enough of good food and drinks!

Here in the **Northwest of Skåne** we've got a little bit more of everything! Hopefully you'll be inspired to find your favourite spot!

**We are:** Bjuv, Båstad, Helsingborg, Höganäs, Klippan, Landskrona, Perstorp, Svalöv, Åstorp, Ängelholm and Örkelljunga.

[www.familjenhelsingborg.se](http://www.familjenhelsingborg.se)

